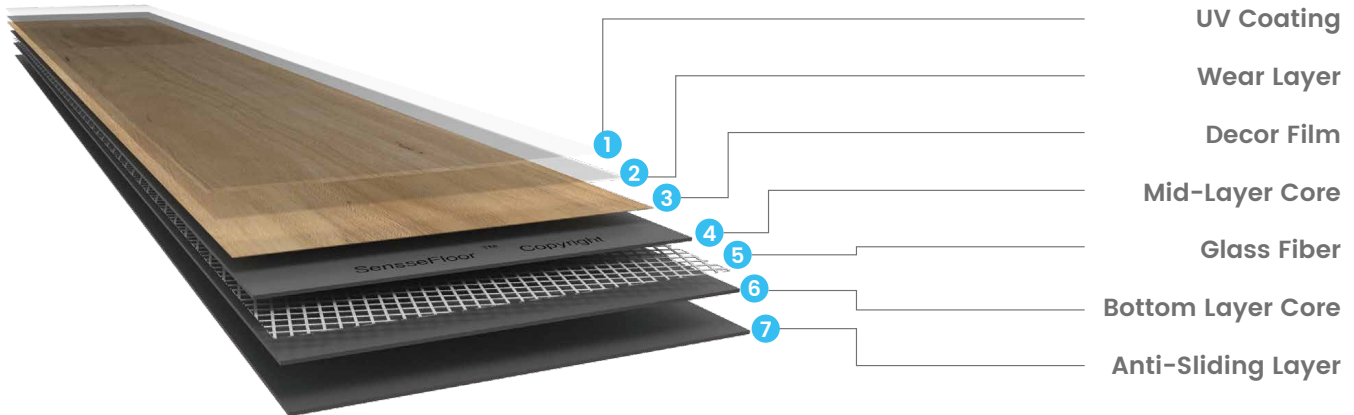


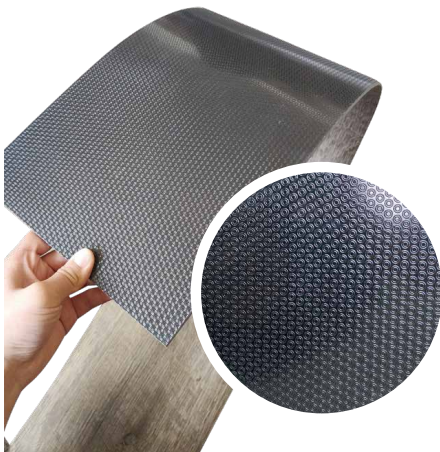


LOSELAY FLOORING

LVT Loose lay flooring is constructed of luxury vinyl flooring with a unique anti-sliding backing, the installation process is simple, the planks or tiles are installed by butting the edges tightly. This provides for an impressive finished appearance, but also provides a high degree of stability. LVT loose lay vinyl flooring therefore does not require adhering to the subfloor or the expensive subfloor preparation which LVT dry back or LVT click vinyl flooring needs. Larger installations may require adhesive around the perimeter. Expansion gaps may not be necessarily required.



Features



Resilient and Flexibility

Loose lay vinyl flooring has very good performance of resilient and flexibility, which allows the floor board to fit better to the sub-ground as the environment change.

Abrasion resistance

With fortifier in top UV coating and PE wear layer with the special technology, The surface abrasion coefficient is more than regular wear layer which brings Sense vinyl floor a longer life time under the right condition of use and maintenance.

Water Resistant

LVT loose lay vinyl flooring is total water proof, The floor plank has no thickness swelling under the water and moisture, without the worry of damage or staining

from water and moisture and counteracts the accidents that happen in our busy lives.

Fire Protection

With high performance of BI fire resistance and thermal insulation, Vinyl flooring offers a very safe and comfortable environment and gives more escaping time in case of fire accident.

Easy Installation (loose lay)

With a unique anti-sliding backing, the installation process is simple, It does not require adhering to the subfloor or the expensive subfloor preparation which glue down vinyl flooring requires. Also Loose lay vinyl flooring is comfortable and simple for floor renovation.

Product's Parameter

Thickness	4.0/5.0/6.0 mm
Wearlayer	0.3/0.5/0.7 mm
Surface Texture	BP/Crystal/EIR
Installation Method	Loose Lay

Technical Specification

Item	Standard	Result
Overall Thick	EN ISO 24236	±0.15mm
Wearlayer Thick	EN ISO 24340	±0.05mm
Squareness	EN 434	< 0.3mm
Dimensional Stability after exposure to heat	EN ISO 24342	X Direction: < 0.1% Y Direction: < 0.05%
Curling after exposure to heat	EN 434	< 0.1mm
Peeling Strength	EN 431	> 60N(50mm)
Residual Indentation	EN ISO 24343-1	< 0.1mm
Castor Chair	ISO 4918	After 25000 cycles, no visible damage
Slip Resistance	EN 13893	Class DS
Fire Resistance	EN 13501-1	Bfl-S1
Abrasion Resistance	EN 660	Group T
Stain & Chemical Resistance	EN ISO 26987	Class 0
Cigarette Burn Test	EN ISO 1399	Class 4
Color Fastness	ISO 105-B02	≥Grade 6

Plank Size



184.9X1219.2(7.28"X48")



228.6X1219.2mm(9"X48")



* The recommend size is for your reference,the actual dimension will strictly follow the confirmed order.